

50 PAX ACCOMMODATION WORK BARGE



PRINCIPAL PARTICULARS

Flag	Singapore
Call Sign	
Official Number	
MMSI No	
Class	Bureau Veritas (BV)
Notation	+ Hull + Machinery + ALM + MODU 2009 Special Service AWB
Built	2013
Length Overall	82.296 m
Length B P	82.296 m
Breadth Moulded	21.945 m
Depth Moulded	4.877 m
Draft (design)	3.0 m
GRT / NRT	3,362 T / 1,008 T
Deadweight	3,105 Tonnes

CARGO CAPACITIES

Clear Deck Area	357.93 m ²
Deck Strength	10 MT/M ²
Fuel Oil	324.06 m ³
Fresh Water	536.85 m ³
Water ballast	3199.25 m ³
Displacement	5,331 tons

POWER SYSTEM

Main Generator	04 x Cummins K19-DM, 400KW, 380V 3PH, 50 HZ, 760 MPS
Emergency Generator	01 x Cummins NTA855-DM, 240KW, 380V, 3PH, 50 HZ, 475AMPS

DECK EQUIPMENT

Main Crane(IOE)	01 x Pedestal mounted 250 Ton @ 14 m radius, 45 m boom length API 2C spec, electro hydraulic
Auxiliary Crane (IOE)	01 x Telescopic 10 Ton @ 10m radius on Aft Stbd
Mooring Winch	8 points mooring, single drum 42mm x 800m c/w spooling device, 30T x 15m/min, local and bridge control
Mooring Anchor	08 x 4000 kgs Flipper Delta
Fairleads	08 x Universal type [4 rollers]
Mooring Buoys	08 x 1m ϕ x 2m length Steel buoys
Anchor and Windlass	01 x 117KN WL, stockless bower anchor x 3300 kgs, cable chains 12 shots x 44 mm ϕ U3
Aluminium Mini Tug	7.6 x 2.9 x 1.2 m boat c/w 315 BHP Cummins engine, 1 MT Bollard Pull
Portable Diving System	02 x LARS c/w ridding winch 02 x 20' Cntr c/w 60" ϕ decompression chamber, 3 men air/mixed gas dive panel, Underwater CCTV, WS with LP and HP compressor

FIRE FIGHTING & LIFE SAVING EQUIPMENT

Fire Pump	01 x 100m ³ /h x 60m head, centrifugal,
Emergency Fire Pump	01 x 50m ³ /h x 60m head, centrifugal,
CO ₂ Fire Extinguishing	Genset compartment
Fire detection & Alarm	E/room & common area
Life rafts	04 x 25 men
Life Boat &	02 x 50 men
Rescue Boat	02 x 6 men
Search Lights	03 x 1000 Watt 01 x 2000 Watt

All other FFE/LSA as per SOLAS and MODU requirement

ACCOMMODATION [Total 50 persons / 25 cabins]

3rd Deck	Control room, Ballast and Anti Heeling Remote Control Panel, Main Crane Hook Rest, Open Storage
2nd Deck	14 x single berth cabin, Office with 4-9 work stations, Conference room, Gym room
1st Deck	04 x two berth & 07 x 4 berth cabins, client's dining room, officer abd rating mess, gallery, cold room endurance for 45 days provisions, recreation room with 60" LED TV and karaoke set
Main Deck	Single bed hospital, pantry room, laundry room, safety induction room for 20 men, prayer room, smoking CO2 and Emergency Gen. room. Workshop Equip with lathe machine, drilling, grinder, cutting & welding set

COMMUNICATION AND NAVIGATION EQUIPMENT

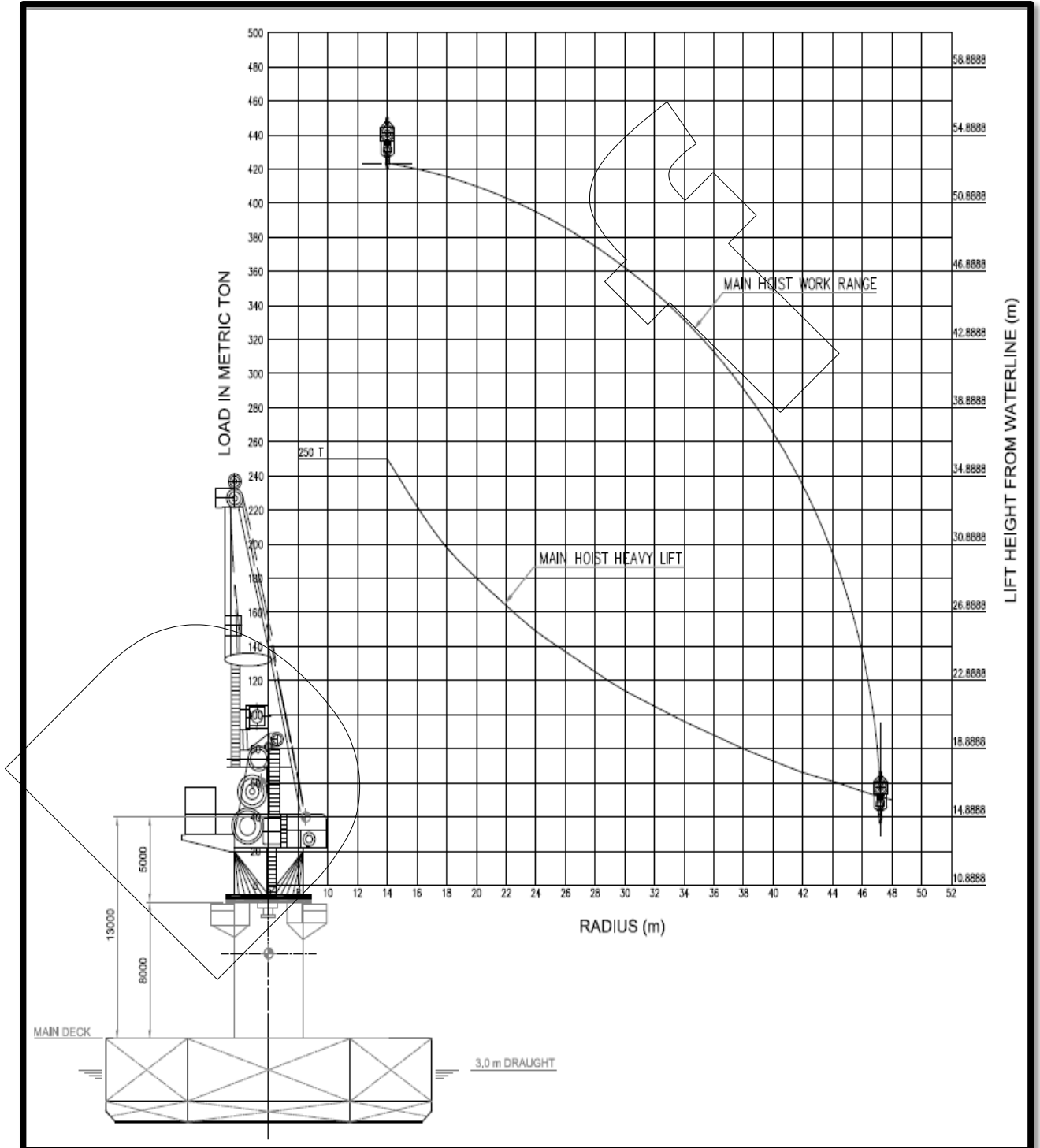
GMDSS Radio Console	A3
SSB radio	01 x 6310 Sailor
Inmarsat C	02 x C 6110 Sailor
Fleet Board Band	01 x 150 Sailor (Chobam)
Marine Radar No.1	01 x JRC JMA-3334 [48nm]
Gyro-compass	01 x Anschutz BST2201 c/w 2 Repeater
VHF Radio	02 x 6222 DSC Sailor
Portable VHF Radios	02 x SAILOR SP3520 12 x ICOM IC-M24
Portable VHF/FM Radios	06 x GP328 Motorola
Navtex Receiver	01 x NCR333 JRC (Raytheon)
Echo Sounder	01 x 200 kHz & 50 kHz JRC
DGPS	01 x SAAB R5 DGPS
SART	01 x Sailor SART II
EPIRB	01 x Sailor SE 406-II
Magnetic Compass	01 x L & G MK2002S
Wind Sensor	01 x L & G 2030 MK2 sch865
SSAS	01 x SAILOR 6194 [add-on Kit]

Vessel also fitted with Zenitel PA talk back system & self-powered telephone

MISCELLANEOUS

Oily Water Separator	01 x 0.5m ³ /hr, 15 ppm
Fresh Water Maker	01 x 12,000litre/day, PETSEA RO
Ballast Water Treatment	01 x 300m ³ /hr , COSCO BOS300X1
Sewage Treatment Plant	01 x 70 men, 5m ³ /day , HANSUN
Incinerator	01 x 180,000kcal/hr, IMO sludge /solid waste
Air Compressor	01 x 600 cfm @ 110 psi
Anti Heeling system	01 x Tsurumi Pump 720m ³ /Hr, Automatic and manual control from wheel house
Ballast / Bilge System	02 x 200m ³ /hr, control system from wheel house & Engine Control
room Draft Measuring system	4 x draft Point with LCD layout at wheel house

250 Ton API 2C CRANE LOAD CHART



Particulars believed to be correct but not guaranteed. All figures given are approximate only. Owner reserves the right to amend specification without further notice.