

ANCHOR HANDLING, TOWING, SUPPLY AND OFFSHORE OPERATIONS

Principal Particulars

Flag	Indonesia
POR	Batam
YOB	2012
IMO No	
Call Sign	
Length OA	36.00 m
Breadth Moulded	10.40 m
Depth Moulded	5.0 m
Max Draft	4.0 m
Gross Tonnage	448 MT
Net Tonnage	135 MT
Bollard Pull	40 T
Max speed	12 knots
Classification	BV I +HULL +MACH, Tug, Unrestricted Navigation

Machinery

Main Engine	2 x 1600 BHP Cummins KTA 50 M2
Auxiliary Generator	2 units of 240kW/3ph/415V/50Hz Cummins 240MXDEF
Marine Gearbox	2 x Twin Disc MG-5506
Bow Thruster	HRP, 3.2T, electric driven
Propulsion	2 x FPP

Deck and Towing / AH Equipment

Windlass	1 x Electric hydraulic anchor windlass c/w double gypsy drum
Anchor	2 x 550 kg stockless anchor
Anchor Chain	2 x dia 20.5 mm studlink chains
Tugger Winch	2 x 5 MT @ 15m/min
Wire Size	20mm x 100m x 2 units
Tow/AH Winch	Double Drum Type, ME 40 THTW Wire size : 40mm x 600m
Tow/AH Pull (1 st)	40 MT
Breaking Capacity	80 MT on 1 st layer for each drum
Stern Roller	40 MT (SWL) 2500 mm (L) x 1400 mm (dia)
Shark Jaw	1 x 100 MT
Tow Pins	1 x 100 MT

Navigation Equipments

GMDSS	A3.JRC.JSS296
SSB	JRC.JS 196GM
Magnetic Compass	Shanghai 165mm
Auto Pilot	Comnav Admiral 2001RFC
Radar	JRC.JMA2344
Echo Sounder	JRC.FF50
EPIRB	Mcmurdo E5
NAVTEX Receiver	NCR-333
Inmarsat C	JRC JUE 75C
VHF	SR103
MF/HF	JRC JSS-296
VHF-DSC	JRC JHS-32B
DGPS	JRC.JNAV-500

Cargo Capacities

Fuel Oil	350 m3
Fresh Water	100 m3
Freezer	7 m3
Provision Store	7.5 m3

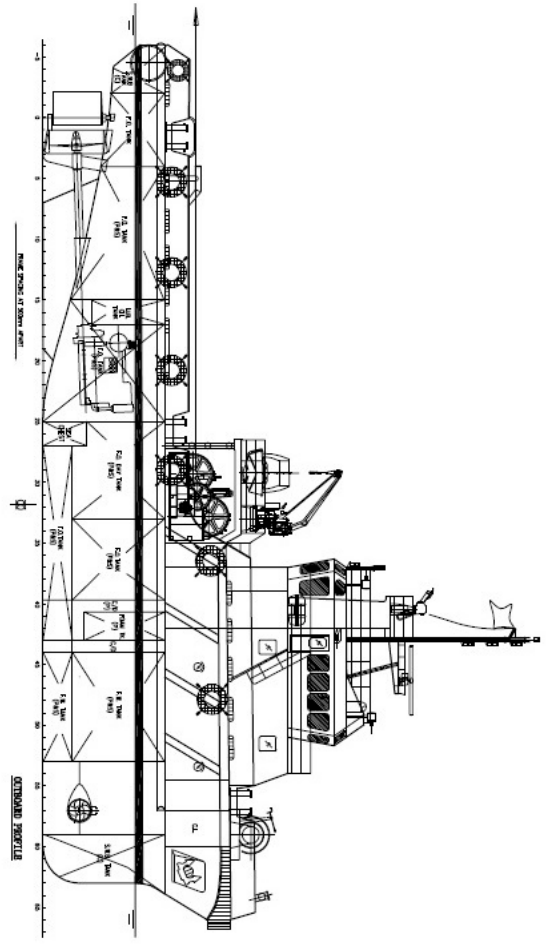
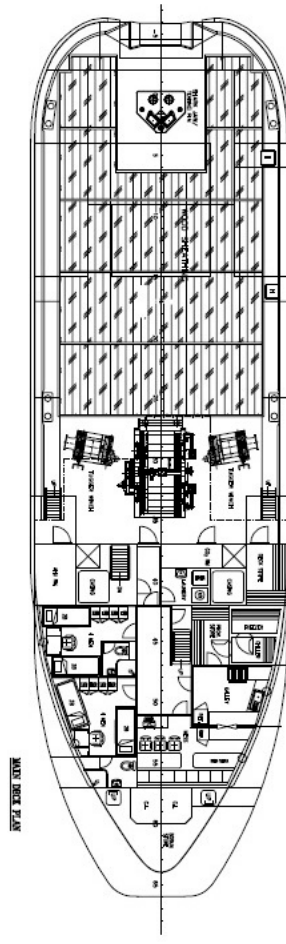
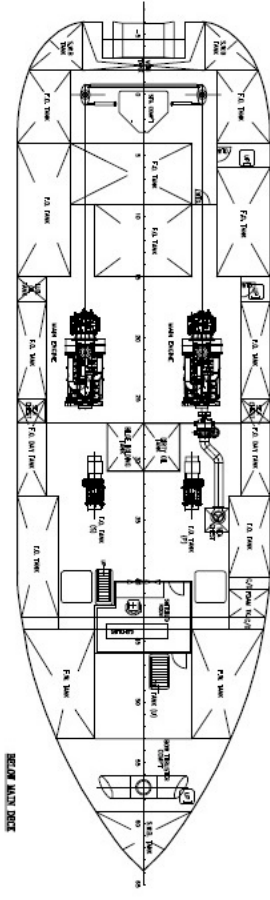
Emergency Responses & Fire Fighting Capabilities

FIFI pump	1400 m3/hr at 120 mlc for 1800 rpm
GS/Fire pump	48 m3/hr at 50 mlc
Firemain	1 set
Fire hydrants	5 sets
Portable fire extinguisher	14 sets
Emergency fire pump	Diesel driven, 25 m3 at 30 m

Accommodation

Berths	2 x 1 berth cabins 1 x 2 berth cabins 3 x 4 berth cabins total = 16 pax
--------	--

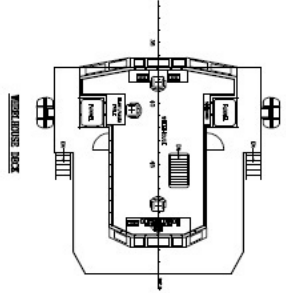
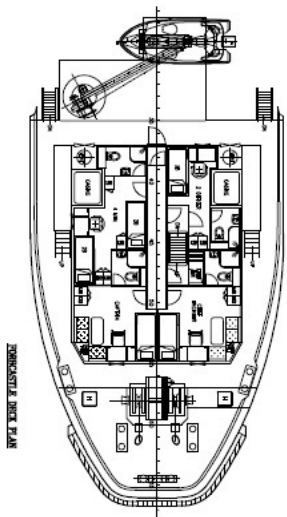
For any enquiry, please drop us a email at marketing@amsbach.com.sg.



PRINCIPAL DIMENSIONS

LENGTH OVERALL: 24.00 M
 LENGTH BETWEEN PERPENDICULARS: 20.00 M
 BEAM AT BROADEST: 4.00 M
 DEPTH AT BROADEST: 1.80 M
 DRAUGHT: 1.20 M
 DISPLACEMENT: 42.0 TONNES

ENGINE: 2 x 18 KW
 FUEL OIL: 18 KW
 DIESEL OIL: 18 KW
 TOTAL POWER: 36 KW
 SPEED: 12.0 KNOTS
 RANGE: 42.0 HOURS



PROJECT		3200HP TWIN SCREW TUG	
TITLE		GENERAL ARRANGEMENT	
DATE	REV	DATE	REV
2011/12	1	2011/12	1
SCALE		1:100	
DRAWN BY		KCM/OS01(C)-01	
CHECKED BY		KCM/OS01(C)-01	
DATE		2011/12	